

Lewa Impact Report

◆◆ 2023



VISION

Lewa envisions a future where people across Kenya value, protect and benefit from wildlife.



MISSION

Lewa Wildlife Conservancy serves as a model and catalyst for the conservation of wildlife and its habitat. It accomplishes this through the protection and management of species, the initiation and support of community conservation and development programmes, and the education of neighbouring communities on the value of wildlife.

Protecting Wildlife, Transforming Lives

The long-term conservation of the wildlife and habitats in Lewa Wildlife Conservancy relies on the success of its neighbours—ranches, farms, communities, conservancies, and public protected areas alike.

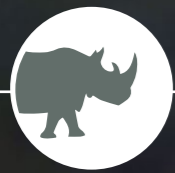
Throughout 2023, our commitment to improving the lives and livelihoods of the indigenous communities around us and empowering them to own the conservation agenda endured. Follow along to learn the incredible milestones we achieved in community-based conservation and wildlife management with your partnership and support.



CONSERVATION AND WILDLIFE

Lewa Wildlife Conservancy has demonstrated remarkable success in fostering a resilient and diverse ecosystem that supports stable and growing wildlife populations. The Conservancy's unwavering commitment to habitat preservation, sustainable practices, and community engagement has played a pivotal role in achieving these milestones.

Lewa employs a combination of research, advanced technology, and community involvement to safeguard and support the protection of numerous endangered species. This holistic approach has notably boosted wildlife populations, with a focus on flagship species like the rhino, as well as other endangered species such as the Grevy's zebra and pancake tortoise. The Conservancy is a secure haven for diverse species, including elephants, lions, birds, and reticulated giraffes. A new sanctuary for mountain bongo on Mount Kenya is nearing completion.



260
rhinos at Lewa



15%
growth in Grevy's
zebra population



42
rhinos underwent
ear notching



7
rhinos fitted with real-time
tracking transmitters



50
acres of invasive
species managed



90%
of the Bongo Sanctuary's
construction completed



COMMUNITY DEVELOPMENT

In the eyes of our neighbours, conservation is a multifaceted resource, fostering sustenance, economic prospects, improved healthcare, and more. Lewa strategically engages with local communities, deeming them indispensable partners in our conservation initiatives. Operating at the nexus of wildlife conservation and sustainable development, Lewa collaborates with neighbouring communities to improve healthcare and provide access to clean water and vocational training. This outreach positively impacts the lives of approximately 200,000 people, underscoring our commitment to holistic community development.

Women's Micro-Enterprise Programme

The Women's Micro-Enterprise Programme (WME) has supported over 2,000 women from Lewa's neighbouring communities in starting small businesses, promoting economic well-being and diversification. The established enterprises include retail shops, flour mills, hair salons, tailoring, and livestock keeping. With the support of Lewa's Women's Microfinance Programme, the WME Programme provided women with microloans, training, and a business networking platform.



59

women received micro-enterprise training



341

women underwent financial literacy training



258

businesses were assessed and issued loans



63,000 USD

disbursed in loans



COMMUNITY DEVELOPMENT

SUSTAINABLE AGRICULTURE

Lewa's Sustainable Agriculture Programme has implemented six demonstration plots in various schools and communities. The plots serve as practical learning environments for farmers, promoting sustainable farming practices and providing hands-on experience in managing the effects of climate change.

Lewa Wildlife Conservancy collaborated with key partners including the International Center for Tropical Agriculture, the East African Seed Company, Syngenta, Bayer East Africa, Corteva, Agri Farm, CKL Africa Ltd., Agitech, and SoilCares, to amplify its impact on farmers and community livelihoods through sustainable agriculture. As a result, farmers benefitted from farm inputs, capacity building, and support for agriculture value chains and market linkages.



1,798

farmers trained through capacity-building initiatives



9

strategic partnerships established



6

demonstration plots established



302

farmers accessed market linkages



250

farmers engaged in fodder production



182

farmers taken for exposure trips



COMMUNITY DEVELOPMENT

WATER CONSERVATION

Most residents in the communities surrounding Lewa depend on rivers and streams for their daily water needs. Proper resource management is paramount to ensure a water supply system exists that sufficiently and sustainably meets the needs of the community, livestock, and wildlife. Lewa has worked with the National Government, local water user associations, and indigenous communities to address water shortages and provide access to clean, safe water for domestic and livestock use.

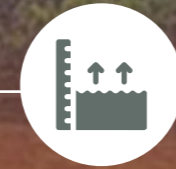


18

water supply projects completed



150,000+
cubic meter Subuiga
Dam completed



90%
water volume achieved



15,000
community members provided
with a new water source

COMMUNITY DEVELOPMENT

HEALTHCARE

Lewa Wildlife Conservancy is continually working to improve healthcare services across the region. Recently, Lewa acquired a modern ambulance, significantly enhancing its healthcare programmes and providing crucial services to local communities. The introduction of the ambulance has made it possible for the community to promptly access medical assistance, leading to a remarkable decrease in fatalities. Community members now contact the Lewa Radio Room, demonstrating increased awareness of and trust in Lewa's ability to respond effectively to health-related emergencies.



19,231

children and **3,000** adult community members directly impacted by the Community Healthcare Outreach Programme



46,020

patients received medical attention at the four clinics supported by Lewa



1

modern ambulance acquired



EDUCATION

One of the most impactful ways that Lewa fosters development in neighbouring communities at the individual level and collectively, is through the Lewa Education Programme (LEP), which offers crucial support to over 9,000 students annually.

By creating opportunities for students, Lewa is ensuring young people become socially responsible and productive members of society.

The LEP accomplishes this through capacity building of teachers, school leaders, and parents, infrastructure development, providing student scholarships, and conducting conservation education trips and digital literacy programmes in response to the needs expressed by teachers, schools, and community members.



3,127

learners and **195** teachers hosted for the Conservation Education Programme



1000+

students in Lewa-supported schools benefitted from the Feeding Programme



15

students from Lewa-supported programme graduated from university



325

students received full scholarships through the bursary programme



130%

increase in Secondary school enrolment



4

additional schools supported, bringing the total to 27



1500+

students participated in mentorship programmes



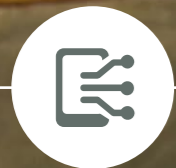
202

Board of Management from 27 schools trained

EDUCATION

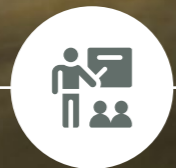
DIGITAL LITERACY PROGRAMME

In 2016, the Kenyan government distributed over a million digital tablets to more than 19,000 public primary schools across the country as part of its mandate to ensure every Kenyan child receives quality education that equips them with twenty-first century skills. To supplement the national programme and ensure students in remote northern Kenya schools have access to quality education, Lewa provided free, age-appropriate digital content that was accessible offline, as well as library infrastructure and management technology.



417

subjects successfully digitised in the Digital Literacy Programme



82

additional teachers trained on PhET, Kolibri and Scratch



12

coded projects successfully developed by learners



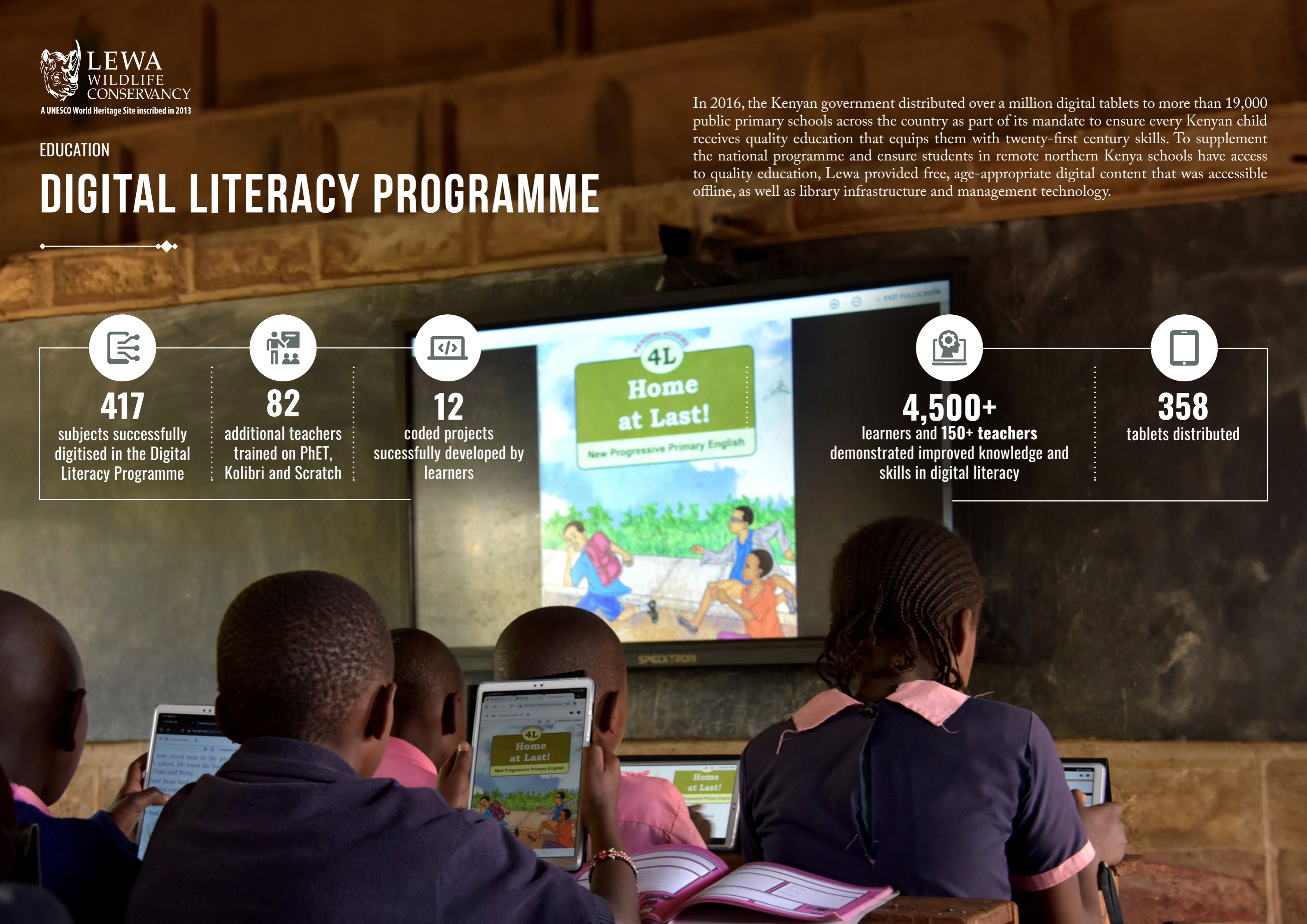
4,500+

learners and **150+ teachers** demonstrated improved knowledge and skills in digital literacy



358

tablets distributed



EDUCATION

SCHOOL INFRASTRUCTURE PROGRAMME

Lewa partners with the twenty-seven local government schools in the region to improve school infrastructure, thus helping to provide a safer, more comfortable, and better equipped learning environment for the students.

The following projects have been successfully completed since the Programme's inception:



24

door additional toilet
rooms constructed



1.1

additional
kilometres of school
fence erected



1

additional kitchen fitted
with energy saving stoves



6

additional class-
rooms constructed
and renovated



1

additional fully
furnished Dining
Hall completed



1

additional school supported with
Early Childhood Development
Education equipment

SECURITY

Lewa Wildlife Conservancy is unwavering in its commitment to maintaining world-class security operations, a mission that is achievable through our strong partnership and active engagement with the neighbouring communities. These communities play a crucial role in our broader conversation efforts, ensuring the safety and well-being of the wildlife in our care.



89

security personnel
trained on wildlife
health capture



44

security personnel
underwent LoRa radio
network training



8

security personnel
trained on rhino
monitoring



4

general security personnel completed
a six-day first aid course



1

new radio operator trained



ANTI-POACHING

The Lewa-Borana landscape provides a secure habitat for many of the world's most vulnerable species, with Lewa serving as the central hub for security and wildlife monitoring across the region and the community-owned member conservancies of the Northern Rangelands Trust.

Using real-time data from EarthRanger, a high-tech monitoring system, and closely collaborating with the neighbouring communities, Lewa's world-class wildlife ranger and security teams not only conserve and protect the Conservancy's flora and fauna but also enhance security for people in the region.



In Conclusion...

We envision a future where people across Kenya value, protect and benefit from wildlife. This future depends on communities being able to derive their day-to-day livelihoods in ways that are compatible with thriving wildlife habitats.

We will continue working to maximise the positive impacts of conservation within Lewa and neighbouring communities as we strive to advance community conservation best practices in Kenya and beyond.

Asante Sana!

The impact and milestones we achieved in 2023 would not have been possible without our global network of partners, donors, and supporters. Our deepest appreciation goes to each and every one of you.

In the last year, with you by our side, we made quantum leaps in conservation and community development. We are proud of the work we accomplished together and excited about the road ahead!

Get Involved

No Lewa project is successful in isolation. Lewa's 360 approach—an interwoven fabric of programmes, people and partnerships working together, has enabled Lewa to achieve significant long-term results over nearly three decades.

Any unrestricted donation to Lewa is a gift to Lewa 360 and an investment in Lewa's overarching mission and model. Join us as a Lewa 360 donor, and your gift will be utilised by Lewa where your support is most urgently needed.

There are many impactful projects that you can support and various ways to give. Check them all out here: www.lewa.org/donate

Say Hello

We would love to hear from you!

Lewa Wildlife Conservancy
P.O. Box 60300, Isiolo, Kenya
Email: info@lewa.org
Phone: (+254) 722 203 562/3

We are Social!

Follow us on:

-  [@lewaconservancy](https://www.instagram.com/lewaconservancy)
-  [@LewaConservancy](https://twitter.com/LewaConservancy)
-  [The Lewa Wildlife Conservancy](https://www.linkedin.com/company/the-lewa-wildlife-conservancy)
-  [@LewaWildlifeConservancy](https://www.facebook.com/LewaWildlifeConservancy)
-  [@lewawildlife](https://www.youtube.com/channel/UClewaconservancy)
-  www.lewa.org